



# "Rezidenca e Mbretëreshës"

OBJEKTI AFARISTO- BANESORË 2B+S+P+14E LAMELA B DHE LAMELA C PRISHTINË

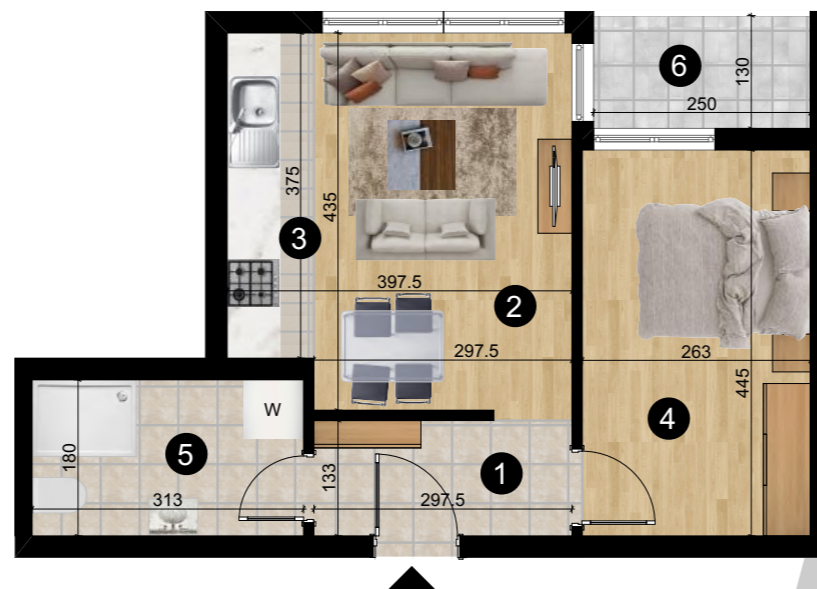
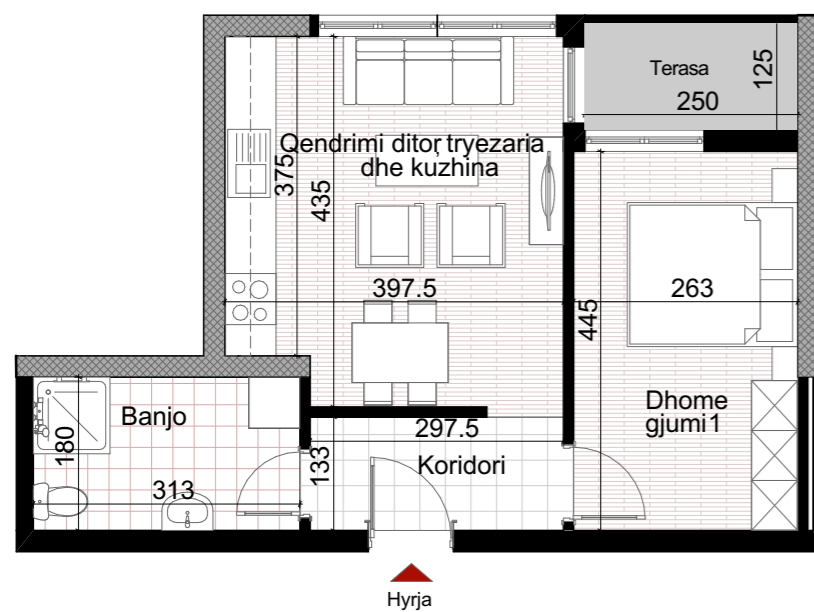


A1|1-9 Lamela B

- 1.Koridori
- 2.Qendrimi Ditor
- 3.Kuzhina + Tryezaria
- 4.Dhoma e Fjetjes
- 5.Banjo
- 6.Balkoni

50.0m<sup>2</sup>

**BANESA NR.1**  
**TOTAL Sbruto= 50.0m<sup>2</sup>**  
**BANESË DY DHOMËSHE**



KATI 1-9

Lamela C

Lamela B

