



# "Rezidenca e Mbretëreshës"

OBJEKTI AFARISTO- BANESORË 2B+S+P+14E LAMELA B DHE LAMELA C PRISHTINË

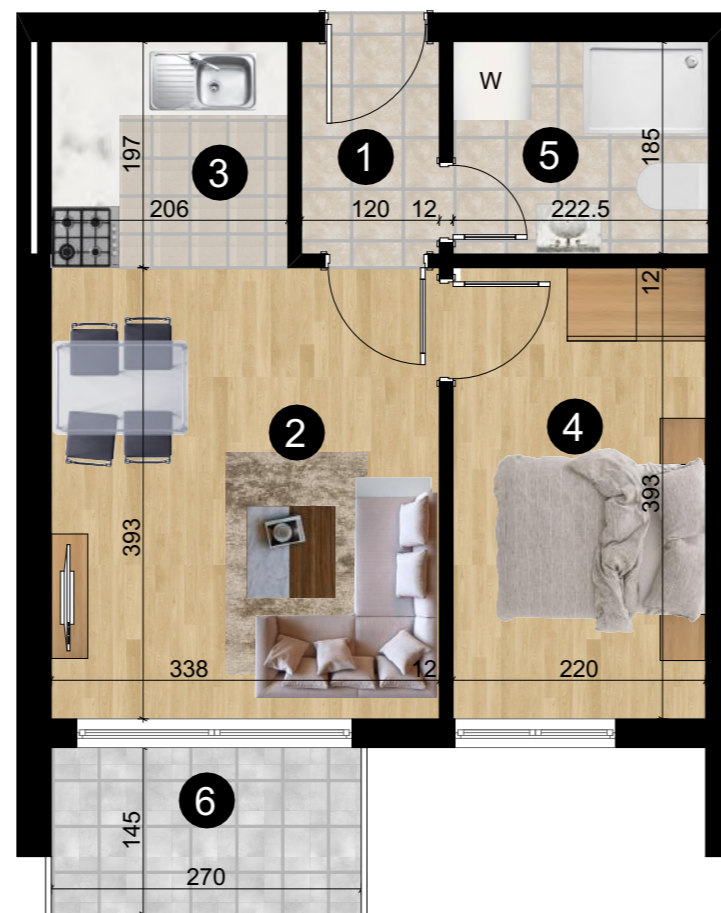
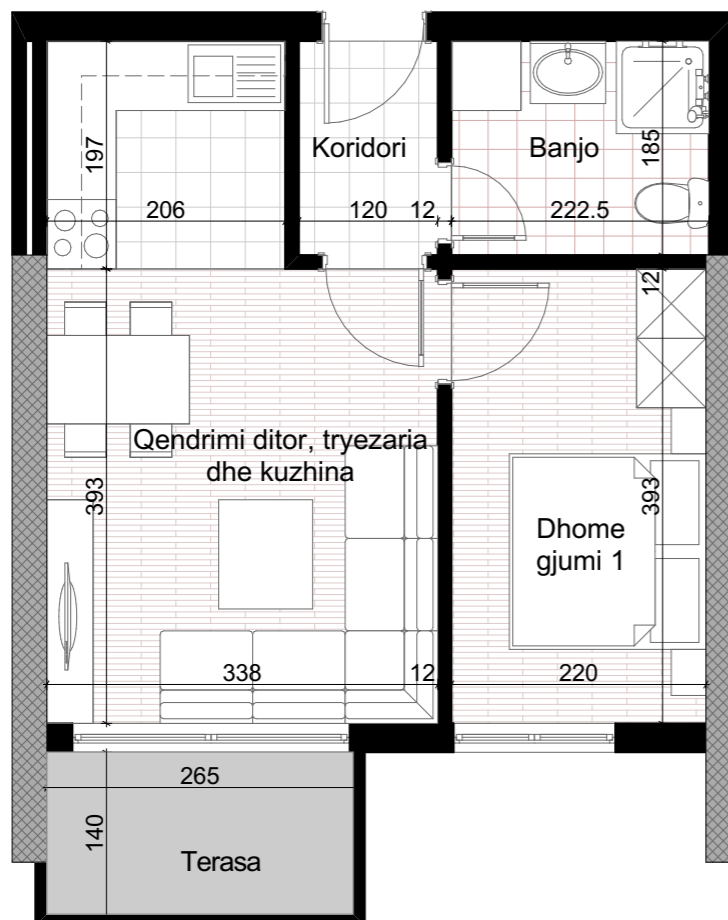


A2| 1-9 Lamela C

- 1.Koridori
- 2.Qendrimi Ditor
- 3.Kuzhina + Tryezaria
- 4.Dhoma e Fjetjes
- 5.Banjo
- 6.Ballkoni

42.8m<sup>2</sup>

**BANESA NR.2**  
**TOTAL Sbruto= 42.8m<sup>2</sup>**  
**BANESË DY DHOMËSHE**



KATI 1-9

Lamela C

Lamela B

